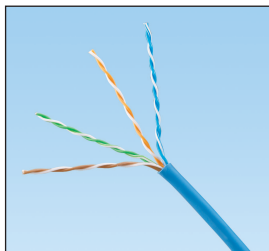


NetKey® Category 6 UTP Copper Cable

Category 6 UTP copper cable meets ANSI/TIA-568-C.2 Category 6 and ISO 11801 Class E channel standards. The conductors are 24 AWG copper insulated with HDPE polymer. The copper conductors are twisted in pairs and covered by a low smoke zero halogen or flame-retardant PVC (CM or CMR) jacket.



technical information

Electrical performance:	Certified channel performance in a 4-connector configuration up to 100 meters and meets the requirements of ANSI/TIA-568-C.2 Category 6 and ISO 11801 Class E channel standards at swept frequencies up to 250 MHz
Conductor/insulator:	24 AWG solid copper insulated with HDPE
Flame rating:	LSZH — IEC 60332-1, IEC 60754-1 and -2, IEC 61034-2 CM — UL 1685 CMR — UL 1666
PoE compliance:	Meets IEEE 802.3af and IEEE 802.3at for PoE applications
Installation tension:	110 N (25 lbf) maximum
Temperature rating:	0°C to 50°C (32°F to 122°F) during installation -20°C to 75°C (-4°F to 167°F) during operation
Cable jacket:	LSZH — Low Smoke Zero Halogen CM — PVC CMR — Flame-retardant PVC
Cable diameter:	5.2mm (0.204 inch) nominal
Cable weight	10 kg/305m (22 lbs./1000 ft.)
Packaging:	305m (1000 ft.) easy-payout box Package tested to ISTA Procedure 1A

key features and benefits

Third party tested	Cable has been tested as part of the NetKey® Category 6 UTP Copper Cabling System by an independent laboratory and complies with the electrical channel requirements of ANSI/TIA-568-C.2 Category 6 and ISO 11801 Class E standards
Reduced cable diameter	For improved installation and termination
Descending length cable markings	Easy identification of remaining cable reduces installation time and cable scrap
Easy payout box	Ensures proper performance and provides quick installation

applications

Applications include:

- Ethernet 10BASE-T, 100BASE-T (Fast Ethernet), and 1000BASE-T (Gigabit Ethernet)
- 155 Mb/s ATM, 622 Mb/s ATM, 1.2 Gb/s ATM
- Token ring 4/16

www.panduit.com

PANDUIT®

SPECIFICATION SHEET

NetKey® Network Components

NetKey® UTP Copper Cable

LSZH:	NUL6CR04BU-CE*
CM:	NUC6CR04BU-CE*
CMR:	NUR6CR04BU-CE*

NetKey® Category 6 UTP Jack Module

Jack module:	NK688MIW**
---------------------	------------

NetKey® Category 6 UTP Patch Cords — CM

Foot lengths:	NK6PC3^Y
Meter lengths:	NK6PC1M^^Y

NetKey® Category 6 Punchdown Patch Panels

12-port:	NK6PPG12WY
24-port, 1 RU:	NK6PPG24Y
48-port, 2 RU:	NK6PPG48Y

NetKey® Category 6 All Molded Punchdown Patch Panels

24-port, 1 RU:	NK6PP24P
48-port, 2 RU:	NK6PP48P

NetKey® Flush Mount Modular Patch Panels

Angled, 24-port, 1RU:	NKPPA24FMY
Angled, 48-port, 2RU:	NKPPA48FMY
Flat, 24-port, 1RU:	NKPP24FMY
Flat, 48-port, 2RU:	NKPP48FMY

NetKey® All Molded Modular Patch Panels

24-port, 1 RU:	NKPP24P
48-port, 2 RU:	NKPP48P

Termination and Cable Prep Tools

JackRapid™

Termination

Tool:	JR-PAN-2
--------------	----------

Conductor

stripping tool:	CWST
------------------------	------

Conductor

stripping tool:	CJAST
------------------------	-------

*For standard cable colors other than BU (Blue), replace BU in part number with WH (White), IG (International Gray), or VL (Violet). (Violet available for NUL6CR04**-CE only.) Contact customer service for region availability. Available in European pallets of 14 cartons per pallet.

**For standard colors other than Off White (IW), replace suffix with EI (Electric Ivory), IG (International Gray), WH (White), BL (Black), BU (Blue), RD (Red), YL (Yellow), GR (Green), or VL (Violet). Add -Q to end of part number for 25-pack convenience package.

^For standard foot lengths other than 3 feet, replace the 3 in the part number with 5, 7, 10, 14, or 20. For standard color other than Off White, add suffix BU (Blue), RD (Red), YL (Yellow), or GR (Green) before the Y at the end of the part number. For example, the part number for a blue, Category 6, 5-foot patch cord is NK6PC5BUY.

^^For standard meter lengths other than 1 meter, replace the 1 in the part number with 2, 3, 4, or 5. For standard colors other than Off White, add suffix BU (Blue), RD (Red), YL (Yellow), or GR (Green) before Y at the end of the part number. For example, the part number for a blue, Category 6, 5-meter patch cord is NK6PC5MBUY.

Fluke JackRapid™ Termination Tool available through distribution. To locate the local office, visit www.flukenetworks.com/contact.

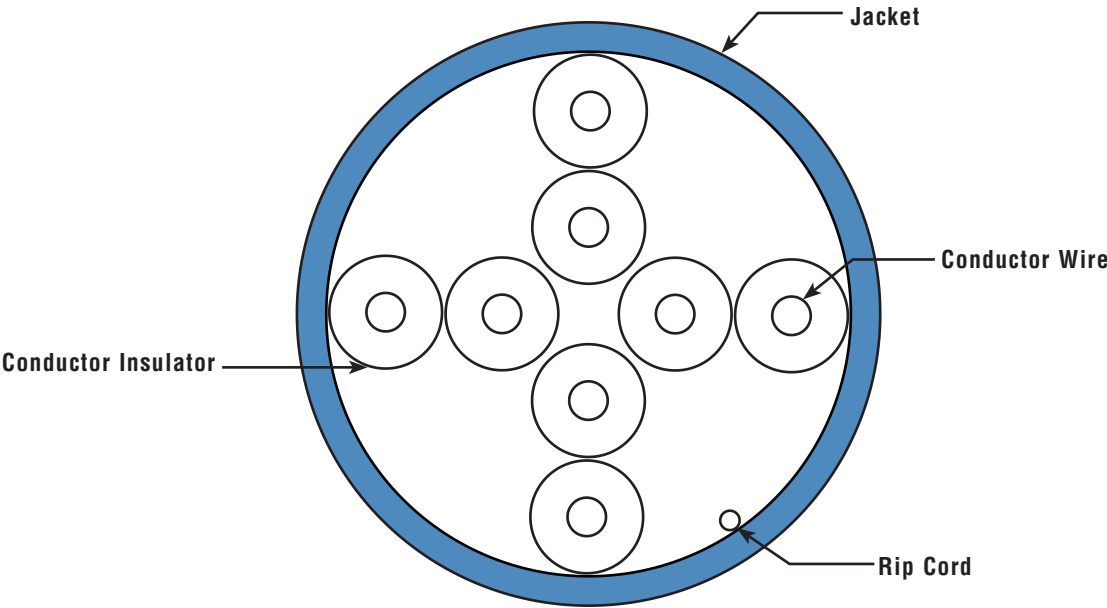
JackRapid™ is a trademark of Fluke Networks.

NetKey® Category 6 UTP Copper Cable

additional specifications

Mechanical Test	
Ultimate Breaking Strength	>400 N (90 lbf)
Minimum Bend Radius	4 x cable diameter
Electrical Test	
Nominal Velocity of Propagation (NVP)	65%
Operating Voltage, Maximum	80V

cable construction



WORLDWIDE SUBSIDIARIES AND SALES OFFICES

PANDUIT CANADA
Markham, Ontario
cs-cdn@panduit.com
Phone: 800.777.3300

PANDUIT EUROPE LTD.
London, UK
cs-emea@panduit.com
Phone: 44.20.8601.7200

PANDUIT SINGAPORE PTE. LTD.
Republic of Singapore
cs-ap@panduit.com
Phone: 65.6305.7575

PANDUIT JAPAN
Tokyo, Japan
cs-japan@panduit.com
Phone: 81.3.6863.6000

PANDUIT LATIN AMERICA
Guadalajara, Mexico
cs-la@panduit.com
Phone: 52.33.3777.6000

PANDUIT AUSTRALIA PTY. LTD.
Victoria, Australia
cs-aus@panduit.com
Phone: 61.3.9794.9020

For a copy of Panduit product warranties, log on to www.panduit.com/warranty

For more information

Visit us at www.panduit.com

Contact Customer Service by email: cs@panduit.com
or by phone: 800.777.3300

©2013 Panduit Corp.
ALL RIGHTS RESERVED.
NKDS26--WW-ENG
Replaces WW-NKDS25
12/2013

